



Beware the Mighty Mite!



Don't let the Spider Mite get the best of your plants and trees.

Call your local Arbor Masters Tree Service today to have one of our certified arborists help you win the battle of the Mighty Mite:

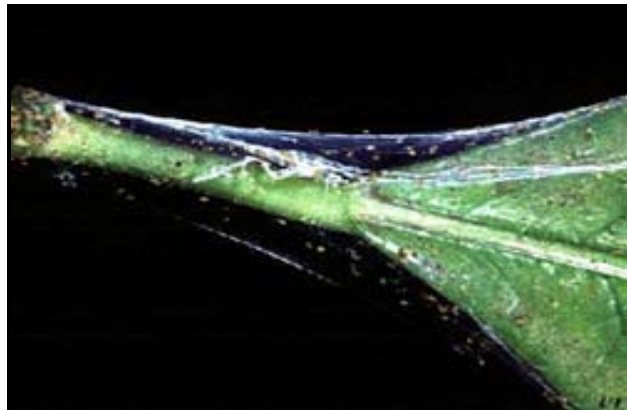
- Kansas City Metro (913) 441-8888
- Wichita, KS (316) 838-3111
- Oklahoma City, OK (405) 495-8746
- Tulsa, OK (918) 258-3444

Check our website www.arbormasters.com for the latest tree and plant care news!

Protect Your Plants and Trees - Spider Mites Attack!

With the warmer days of summer just around the corner, homeowners can expect to start seeing the damaging effects of several common landscape pests. As the temperatures rise, so do the problems with spider mites.

The most common spider mite is the two-spotted mite that regularly attacks a wide range of garden and landscape plants....(Continued on next page.)



Protect Your Plants and Trees - Spider Mites Attack!

With the warmer days of summer just around the corner, homeowners can expect to start seeing the damaging effects of several common landscape pests. As the temperatures rise, so do the problems with spider mites.

The most common spider mite is the two-spotted mite that regularly attacks a wide range of garden and landscape plants.

Mite injury is caused as they feed, bruising the cells of plants with their small, whip like mouthparts and ingesting the sap. Damaged areas typically appear marked with many small, light colored flecks, giving the plant a somewhat speckled appearance. Following severe infestations, leaves become discolored and produce a grey or bronze look to the plant. Leaves and needles may ultimately become scorched and drop prematurely.

Spider mites frequently kill plants or cause serious stress. A tell-tale sign of heavy mite infestations is webbing that will be seen attached to the underside of twigs, leaf stems or entire leaves. A good watering program for your plants during the hottest part of the summer may reduce severe damage and help to promote recovery of previously damaged plants.

Spider mites are classed as a type of arachnid, thus are not controlled by conventional insecticides. A miticide is required to control the adult stage. Mites develop rapidly in warmer weather and become fully grown in as little as a week after eggs hatch. After mating, mature females may produce a dozen eggs daily for a couple of weeks. The fast development rate and high egg production can lead to extremely rapid increases in mite populations. For this reason, an ovicide is recommended as a combination with a miticide to control the full life cycle from egg, nymph, to adult. Normally a series of 2-3 applications over the course of the summer will keep mite damage to a minimum. A schedule about 2-3 weeks apart will control most damage and keep your landscape plants looking their best.

If you suspect mites are ruining your plants or trees contact one of our [certified arborists](#) for a free estimate on how to control or eradicate them. Call us today or submit an estimate request from our [website link here](#). The following short list of plant types most affected by mites:

Trees: Honey locust, Oak, Maple, Elm, Redbud, Dwarf Alberta Spruce, Upright Junipers, and Arborvitae

Shrubs: Burning Bush, Azaleas, Viburnum, Holly, and Roses

[\(Download an additional article about spider mites.\)](#)